



(ERRC) Revolving Rain Cap

Use the revolving rain cap when you have drafting problems caused by wind.

1. Remove the old rain cap.
2. Place the revolving rain cap and screw it to the chimney with the screws supplied (see Figure 1).
3. To clean the chimney, remove the revolving rain cap by unscrewing the four screws that hold it to the chimney. Also check if the revolving rain cap turns well and needs lubrication.
4. If lubrication is required, follow the procedure (see Note 1).
5. If your fireplace smokes, there may be two reasons: either your revolving rain cap does not turn well or your (optional) spark screen (ERCS) is clogged and requires cleaning.

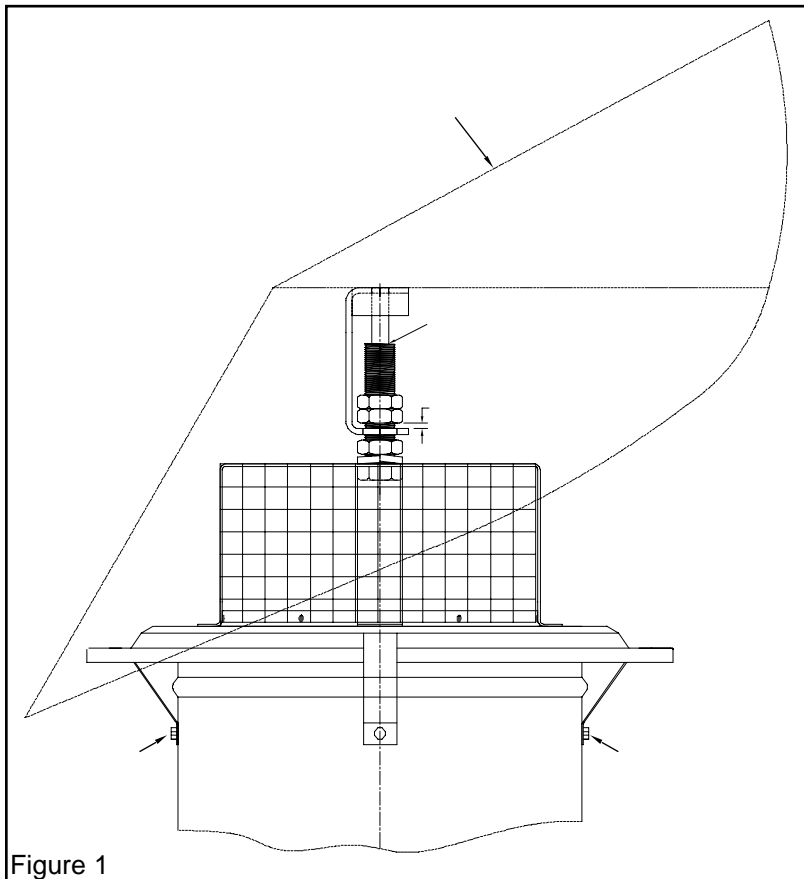


Figure 1

Note 1: Remove both holding screws (see Figure 2), raise the top of the rain cap and then put the grease into the hole (see Figure 3). Put the rain cap in place, then the screws (see Figure 4). If you want your rain cap to revolve smoothly without jamming and avoid back draft problems in your home, use only the high temperature grease (14.17.85) supplied by ICC.

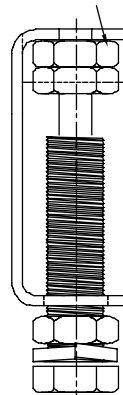


Figure 2

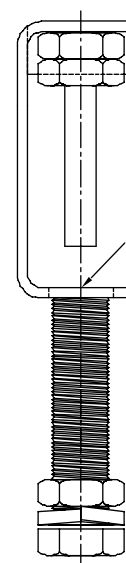


Figure 3

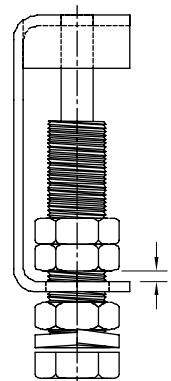


Figure 4