

# EXCEL

THE MOST DURABLE, EASIEST TO INSTALL  
RESIDENTIAL CHIMNEY SYSTEM YOU CAN BUY

## You have less chance of a chimney fire with EXCEL

EXCEL's unique thermoplus insulation has an extremely high insulating value that helps to keep flue gasses hot. Creosote won't condense in a hot flue.

EXCEL is the lightest weight chimney of its kind on the market. Its light weight helps make it the easiest chimney to install. This low thermal mass enables it to heat up quickly, reducing creosote formation.

EXCEL incorporates continuous blanket insulation into a design which eliminates couplings between sections. This means there are no hot spots on the outside, or cool spots on the inside.



# EXCEL Chimney is Certified to Withstand Chimney Fires

EXCEL is tested and listed to the CAN/ULC-S629 chimney standard, widely considered the toughest residential chimney standard in the world. The US standard requires the chimney to withstand three 10-minute 2100°F chimney fires. The Canadian standard requires the chimney to withstand three 30-minute chimney fires, **three times longer than the US Standard.**

*EXCEL was the first 1 inch wall chimney to pass the ULC standard*

EXCEL's unique design allows it to undergo repeated chimney fires without damage. That's why we are able to warrant EXCEL against damage from chimney fires.

## We build it better, so we back it longer

### EXCEL Lifetime Limited Warranty

The most common chimney warranty you will find on the market is one that covers manufacturing defects. EXCEL covers manufacturing defects, PLUS damage to chimneys due to corrosion AND damage due to chimney fires. Now that is a warranty!

**Warranty details are available at:**

<http://icc-chimney.com/en/excel-support>

### Innovative Engineering. Superior Construction.

EXCEL tackles four major chimney design and quality problems head on.

#### By not using end caps, EXCEL eliminates:

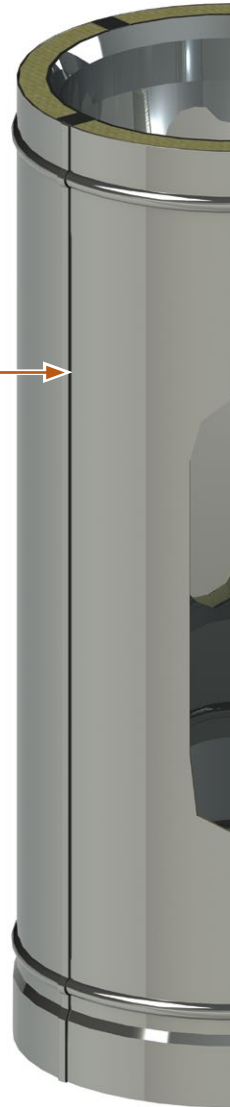
- rigidity at the joints, which can inhibit the expansion and contraction of the flue. Expansion is essential to surviving a chimney fire without damage.
- heat being conducted from the flue to the outside casing. A cool flue and hot outer casing is exactly the opposite of how a chimney should work.

#### EXCEL's continuous seam welded construction:

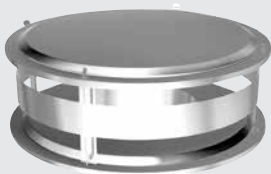
- reduces mechanical stress under chimney fire conditions, by removing the weakest link in chimney design - the lock seam.
- ensures the chimney is completely gas and water tight.



EXCEL has been tested and listed to the UL 103HT and ULC S-629 chimney standards by INTERTEK.



## IMPROVE THE PERFORMANCE & APPEARANCE of your EXCEL chimney with specialty flashings & rain caps.



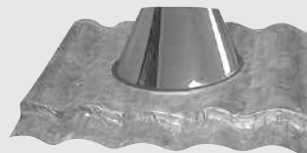
#### Deluxe Rain Cap (EDRC)

The only cap in the industry covered by a lifetime warranty



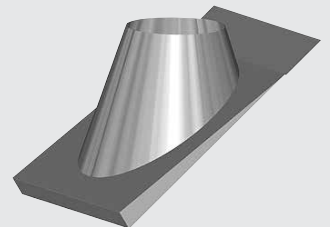
#### Revolving Rain Cap (ERRC)

Perfect for high wind areas



#### Flexible Base Flashing (ELF)

Customizable to any roof shape



#### Metal Roof Flashing (EMF)

The easiest flashing to install on a metal roof ever made

## Technical Information

### Certification

EXCEL is tested and listed by Warnock Hersey - Intertek Testing Services to two safety standards:

**UL 103HT - The standard for solid and liquid fuel chimneys installed in the USA.** Along with many other tests, the UL 103HT Standard requires the chimney to withstand three 10 minute chimney fires at 2100°F (1150°C).

**ULC S-629 - The standard for solid and liquid fuel chimneys installed in Canada.** Along with many other tests, the ULC S-629 Standard requires the chimney to withstand three 30 minute chimney fires at 2100°F (1150°C).

### Allowable Flue Gas Temperatures

|                     | <b>ULCS629 (Canadian)</b> | <b>UL103HT (USA)</b> |
|---------------------|---------------------------|----------------------|
| Max Continuous      | 650°C (1200°F)            | 538°C (1000°F)       |
| Brief Forced Firing | 925°C (1700°F)            | 760°C (1400°F)       |
| Tested To           | 1150°C (2100°F)           | 1150°C (2100°F)      |

### Applications

Excel chimney is suitable for use on appliances that burn:

- Wood
- Oil
- Coal
- Gas
- Charcoal

It is specifically engineered for wood burning stoves, fireplaces and residential furnaces.

### Clearance to Combustible Materials

2" clearance except in areas protected by factory-built supports certified for reduced clearance. EXCEL round and square supports permit the chimney to be installed with approximately 1" of clearance - in the area shielded by the support.

### Construction

**Flue:** .016" 304 or FW2 stainless steel

**Casing:** .016" 430 stainless steel

**Seam:** Interior and exterior seams are continuous seam welded

**Insulation:** Thermoplus continuous blanket

**Wall thickness:** 1"

**Paint:** All black EXCEL components are painted with Forrest "Stove Bright" flat black paint

### Premium Materials

- EXCEL's unique "Thermoplus" insulation heats flue gases quickly due to its extremely high insulating value.
- The continuous blanket insulation design eliminates couplings between sections. Chimney manufacturers who pack the insulation, force it in under pressure, which can inhibit the ability of the flue to expand during a chimney fire causing the liner to buckle.
- "Thermoplus" stays soft even after years of use and won't settle like packed insulation.
- EXCEL is the lightest weight chimney of its kind on the market, making it easy to install.
- Both EXCEL's flue, and its casing are .016" stainless steel.



**Adjustable Peak Flashing (EPF)**

Fits any peak from 2/12 to 12/12



**Rain/Wind Shield (ERCW)**

Additional protection for regular or deluxe caps

### EXCEL Dimensions and Support Capacities

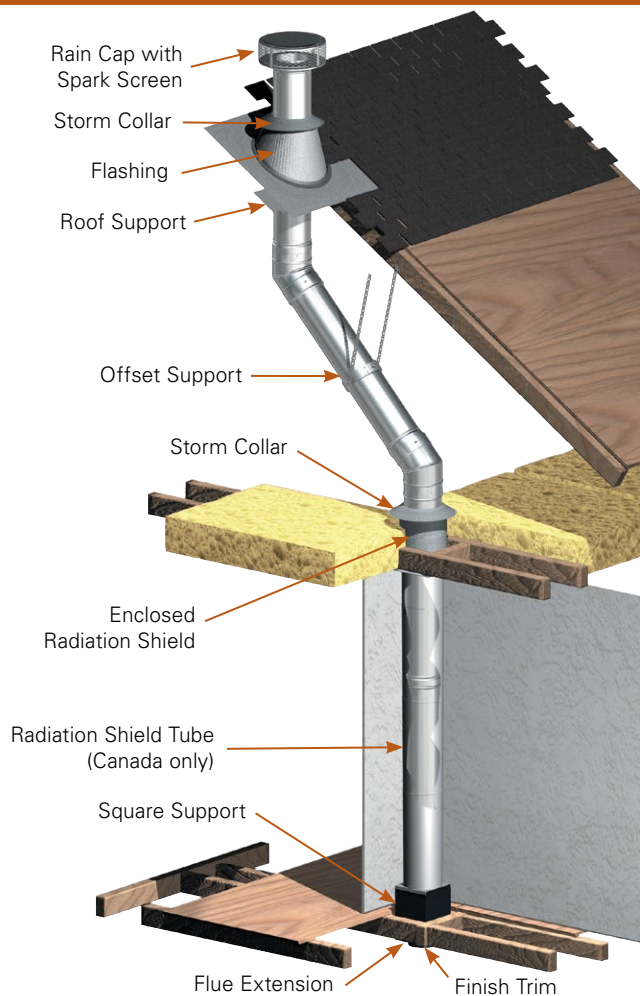
| Chimney size                             | 5"      | 6"      | 7"      | 8"      |
|--|---------|---------|---------|---------|
| <b>Rough opening required (INCHES)</b>   |         |         |         |         |
| Round support (ERDS)                     | 10 x 10 | 10 x 10 | 11 x 11 | 12 x 12 |
| Square support (ESS)                     | N/A     | 10 x 10 | 11 x 11 | 12 x 12 |
| Roof support (ESR)                       | 11 x 11 | 12 x 12 | 13 x 13 | 14 x 14 |
| Offset support (EOS)                     | 11 x 11 | 12 x 12 | 13 x 13 | 14 x 14 |
| Radiation shield (ERS & ERSA)            | 11 x 11 | 12 x 12 | 13 x 13 | 14 x 14 |
| Wall radiation shield (EWRS)             | 10 x 10 | 10 x 10 | 11 x 11 | 12 x 12 |
| <b>Maximum height per support (FEET)</b> |         |         |         |         |
| Round support (ERDS)                     | 65      | 55      | 50      | 45      |
| Square support (ESS)                     | N/A     | 55      | 50      | 45      |
| Roof support (ESR)                       | 65      | 55      | 50      | 45      |
| Wall support (EWS)                       | 50      | 44      | 37      | 35      |
| Offset support (EOS)                     | 35      | 30      | 27      | 25      |

**Radiation shields must be used at all floor joist and ceiling areas**

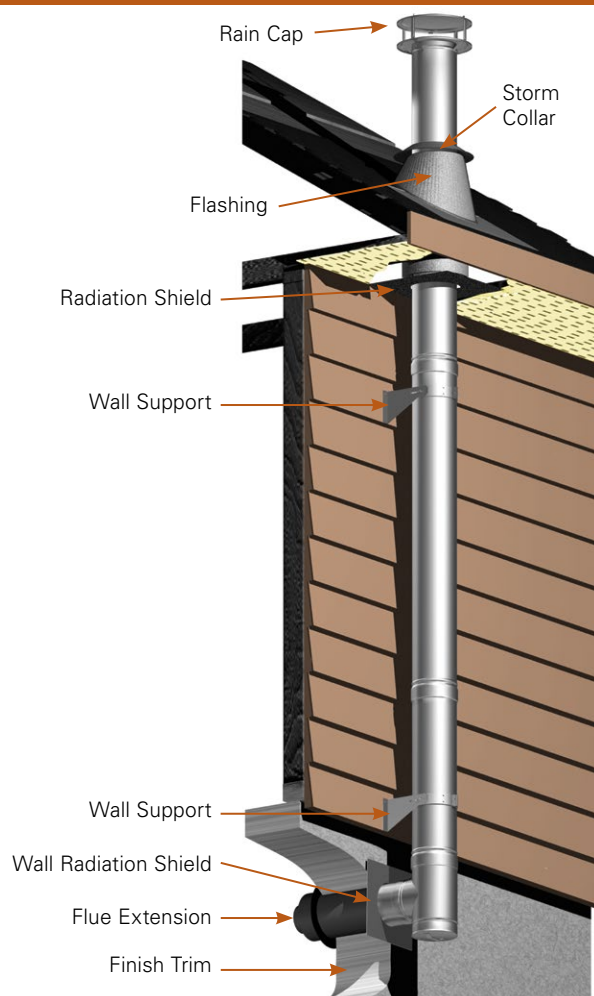
# EXCEL Typical Installations

To determine what EXCEL parts are needed for your woodstove installation, try our ICC Chimney Configurator at: [icc-chimney.com/en/configuration-tool](http://icc-chimney.com/en/configuration-tool)

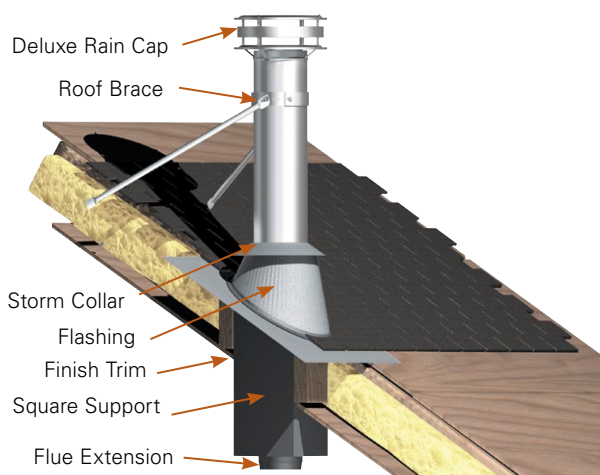
## OFFSET



## EXTERIOR



## CATHEDRAL CEILING



## SINGLE STORY

